

Chapter News

Summer 2013



News & Notes

2013 Lineup

Don't miss the great speakers we have in store for this year! See more on the back page!

2014 Regional

The Tennessee Chapter will host the 2014 Southeast Regional in Chattanooga. Be on the lookout for more details.

Foundry Environmental 101-13 Seminar & 25th EHS Conference

The 25th Environmental Health & Safety Conference will be held Aug 13—14 at the Marriott City Center, Pittsburgh, PA. It will be held in conjunction with the Environmental 101-13 seminar scheduled for Aug. 11—12.

AFS Institute

The AFS Institute has announced new courses, format and content. The curriculum has been expanded, starting with entry level knowledge and skills and then building up to the more advanced technology and applications.

Golf

Reservations:

The enclosed form must be faxed to Sandy Pierce (EMSCO) at (256) 835-0720 by Friday, August 16, 2013. All foursome members must register separately. Cost is \$80 which includes green fees, cart, drinks on course, & lunch.



2013 *Ben* *Dunning* *Annual* *Golf Outing*

Saturday, August 24, 2013

Mountain View Golf Course

Registration Form and Map Inside

6:00 am– Golf Registration

6:45 am- Shotgun Start

9:30 am- Horseshoes & Bingo

11:00 am– BBQ Lunch

12:00 pm– Door

Prizes

Register by Friday,
August 16th
Details inside!

Tee Box Ads:

Tee Box Advertising is available for foundries & suppliers. This is a quality, color sign bearing your company name & logo. Cost is \$100. Contact Rick Walsh (Alabama Copper & Bronze) @ (205) 856-3737 or @ alabamacopper@bellsouth.net for details.

Lunch Only Reservations:

Make your lunch reservation by contacting Tommy Horton @ (205) 655-2123 [fax] or (205) 661-0206 [phone] by Friday, August 16, 2013. Lunch cost is \$20.

2013—2014 Birmingham Chapter Officers



Chairman

Donnie Hoffman
Bert Smith & Associates
(205)621-3630
donniehoffman@hotmail.com

1st Vice Chairman

Molly Cameron
American Cast Iron Pipe Co.
(205) 488-7386
mcameron@american-usa.com

2nd Vice Chairman

Rick Walsh
Alabama Copper & Bronze
(205)856-3737
alabamacopper@bellsouth.net

Secretary

Sherry Alexander
S&B Industrial Minerals NA
(205) 296-7674
s.alexander@sandb.com

Treasurer

Diane Kirkley
Vulcan Engineering
(205) 663-0732
kirkleyd@vulcangroup.com

Directors (Expiring 2014)

Randolph Fowler
American Cast Iron Pipe Co.

Jeremy Mowry
American Cast Iron Pipe Co.

Jack Shea
Research Solvents & Chemicals

Ed Boyd, Sr.
Goldens' Foundry

Directors (Expiring 2015)

Ken Murphy
American Cast Iron Pipe Co.

Phil Storey
Grede—Columbiana

Jamey Reynolds
Grede

Directors (Expiring 2016)

John Boyd
Goldens' Foundry

Bill Bush
Porter Warner

Sandy Pierce
EMSCO



From the Desk of the Chapter Chairman...



Hello Birmingham Chapter!

Summer is now in full swing and the next AFS Birmingham Chapter Season is fast approaching. I would like to welcome our incoming and thank our outgoing officers and board members. Ed Boyd did a fantastic job as Chairman last year and I wish him the best as the new season begins. As we gear up for the upcoming picnic and meeting schedule, I would like to ask you to reflect on what the chapter means to you and ask yourself: How does the chapter reflect the molten metals industry in our community? How can the AFS Birmingham Chapter help me and my colleagues and/or employees. What can I do to better the Chapter? Am I doing enough or could I do more?

If you would like to volunteer or serve in any way, please contact a board member or chapter officer.

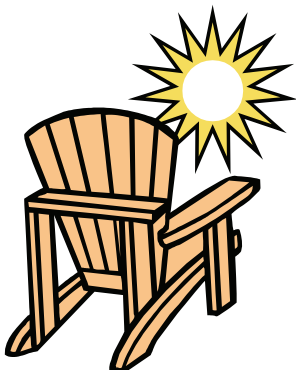
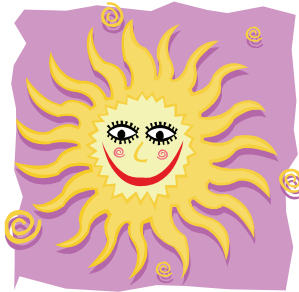
I believe we have one of the best chapters in the country due to members like you. Our volunteers work tirelessly for the good of the chapter. Members like Ken Murphy, who on his own time, heads up our “Foundry In A Box” program. I believe this program has been truly invaluable in our local schools to help educate young people on what our industry is about. I'd also like to mention Tommy Horton, who has dedicated so much of his time to our chapter that he was awarded a Service Citation from AFS National.

In looking at the upcoming year, our Vice Chair, Molly Cameron, has put together a wonderful slate of speakers for us while also working on some great technical sessions. Our Second Vice Chair, Rick Walsh, has organized an exciting picnic for us this year complete with golf, horseshoes, bingo, and fellowship.

Make your reservations now to come out and kick the season off right!

Donnie Hoffman

2013—2014 Chapter Chariman





Opportunities

Mini-Seminars

This year, the chapter plans to host 3 mini-seminars in conjunction with our monthly meetings. We are currently looking for speakers/panelists for the following:

1. Furnace Installation & Maintenance - October 14
2. Alloy Recovery, Refractory, & Temperature - Tentatively March 10
3. Environmental - Tentatively April 14

If you or someone from your company would be willing to help out, please contact Molly Cameron at mcameron@american-usa.com or 205-488-7386.

Foundry in a Box

Ken Murphy will once again be looking for volunteers to introduce our industry to young people through the Foundry in a Box. If you would be interested in helping him out, please contact Ken at kmurphy@american-usa.com or 205-617-1515.

Chapter Committees

The chapter is in need of new faces, as well as old ones, on our committees. If you would be interested in taking a more active role in the Birmingham chapter by serving on a committee, contact Donnie Hoffman at donniehoffman@hotmail.com or 205-621-3630.

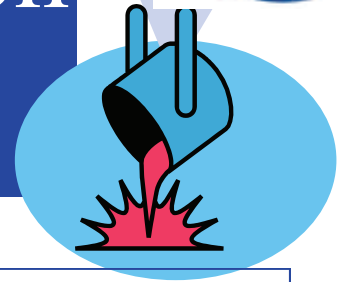
Meet your Officers:



Donnie Hoffman serves as the Chairman of the Birmingham Chapter of AFS. He holds the position of COO at Bert Smith & Associates. Donnie has been in the foundry business for 19 years. To get in touch with Donnie, call him at 205-542-2586 or email him at donniehoffman@hotmail.com.



Southeast Region Area News



Piedmont Chapter 2013-2014 Meeting Schedule

September 25—26, 2013	Charlotte, NC	Energy Conservation Charlotte Pipe / Donald McLain
November 20—21, 2013	Greenwood, SC	TBA Crown Castings / Mike Looby
January 29—30, 2014	TBA	Safety and Environmental Conbraco Pageland / Greg Southerland
March 26—27, 2014	Blacksburg, VA	Advancements in Molding Grede Radford / Greg Southerland

** These are tentative at this time. Some dates, topics, or locations could change.

***Tennessee
Chapter Schedule
coming soon!***

Don't miss the great lineup of speakers coming to the Birmingham Chapter meetings this year!

Up first will be Bob Smith, President of Lee Brass. He will be engaging the chapter at the September 9th Anniston meeting.

At the October 14th meeting, don't miss George Houghton, Senior Engineer for Carbide Industries speaking on "What would you do if catastrophe struck?"

And, let's learn about how different generations operate in the workplace with Sharon Lovoy on November 11th.



2013 Ben Dunning Golf Outing Registration Form

Saturday, August 24, 2013

Registration is due by Friday, August 16, 2013

Fax to Sandy Pierce—EMSCO—at (256)835-0720 or email to spierce@emsco.com

Name: _____

Company: _____

Phone #: _____

Date: _____

Requested Foursome

Choice of foursome will be granted where possible

2. _____

3. _____

4. _____



IMPORTANT! - A Form must be submitted for each foursome member.

Format

1. Cannon Start
2. Four (4) man scramble
3. Must use each player's tee shot twice
4. Soft spikes required
5. Hole Prizes: Longest drive, Closest to the pin, Closest to the line
6. Winners will be determined in two categories
 - A-Team net score
 - B-Handicap, Team adjusted score



Golf: \$80 per player includes green fee, cart, drinks, & lunch

LUNCH ONLY (Lunch \$20)

Fax or phone Tommy Horton by Friday, August 16, 2013

Phone (205) 661-0206; Fax (205) 655-2123 or

Visit the website at: www.afsbirmingham.org

Name: _____

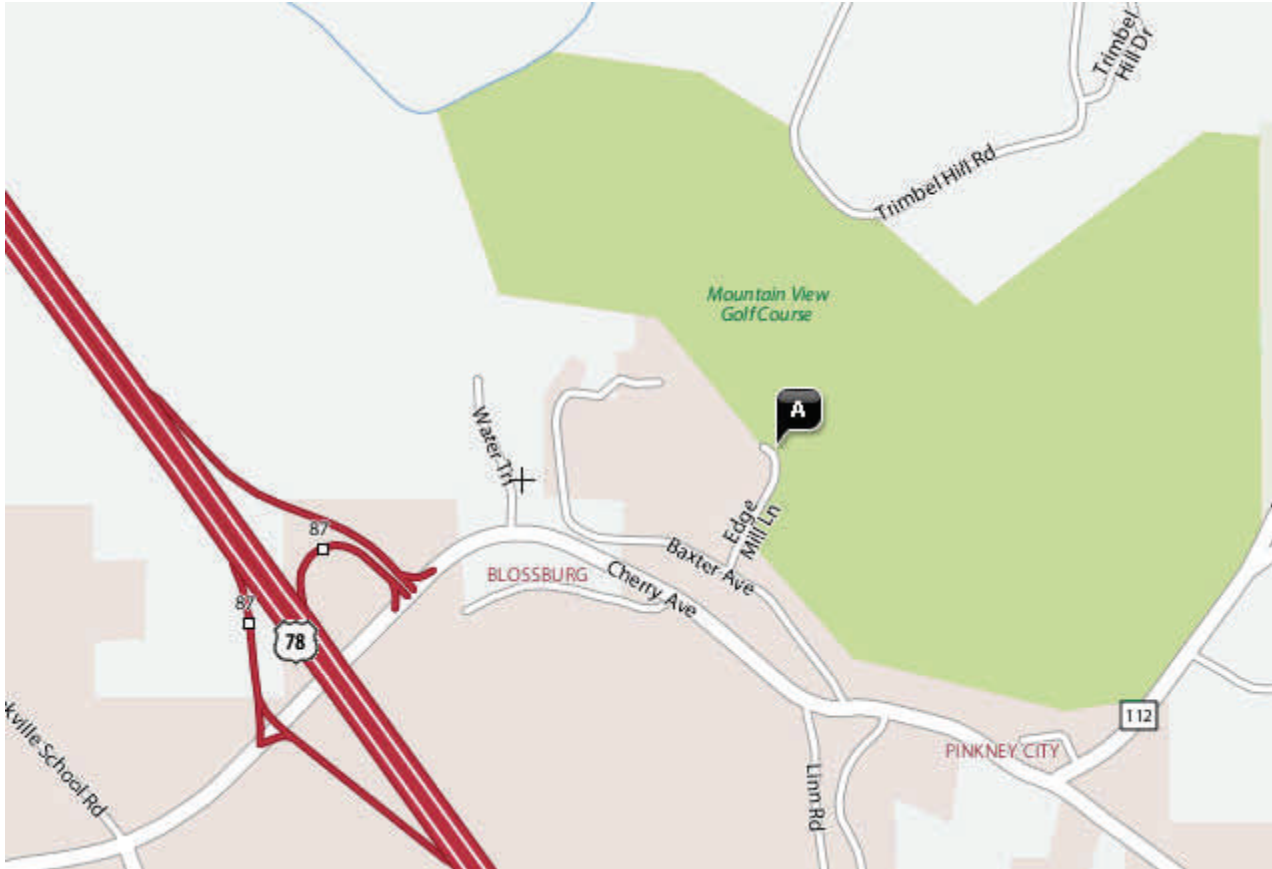
Company: _____

Phone #: _____

Date: _____

Exit 87 Off Corridor X

**Map To Mountain View Golf Course
3200 Mountain View Drive
Graysville. AL
(205) 674-8362**



Directions to Mountain View Golf Course:

From Birmingham take Arkadelphia Road Exit (Birmingham Southern) off of I-20/I-59 and head west toward Graysville.

Take the Corridor-X and head east toward Brookside.

Take Exit 87 and turn left at the bottom of the ramp.

Go about two miles to turn left on Baxter Avenue and then left onto Mountain View Drive.

Mountain View Golf Course is at the end of the road.

From I-65, take Daniel Pane (41st Ave W) exit 264 and head west. Turn right on to Coalburg Rd.

Take Corridor-X and head west. Take Exit 87 and turn left at the bottom of the ramp. Go about two miles and turn left on Baxter Avenue and then left onto Mountain View Drive. Mountain View Golf course is at the end of the road.

From Jasper, take Corridor-X and head east.

Take Exit 87 and turn left at the bottom of the ramp.

Go about two miles to turn left on Baxter Avenue and then left onto Mountain View Drive.

Mountain View Golf Course is at the end of the road.

ADDITIONAL CHAPTER CONTRIBUTION AND PUBLICITY OPPORTUNITIES



Golf Outing

August 24, 2013 - Annual Ben Dunning Golf Outing

Tee Box Ad - \$100.00

This is a quality, color sign bearing your company name & logo
(There will only be one golf event this chapter year with half of the sponsor money going to the student chapters)



Send checks payable to: AFS Birmingham Chapter
c/o Diane Kirkley, Chapter Treasurer
Vulcan Engineering Co.
P.O. Box 307, Helena, AL 35080.

2. Gift Bags

We will be putting together gift bags for those who attend the golf outing. We will be taking donations of items to put into gift bags or monetary donations to purchase items for the bags. Anything you contribute can have your company logo.



For full details and to place tee box ad reservations and gift bag donations contact:

Rick Walsh - Alabama Copper and Bronze - 205-856-3737
(rickwalsh91@gmail.com)

Or

Tommy Horton – Laempe Reich Corp. – 205-655-2121

Be sure to check out our website
www.afsbirmingham.org for a complete list of meetings,
outings and the latest news!

Foundry in a Box Update

Ken Murphy and the Foundry in a Box recently set up a demonstration at the Mooresville Festival on May 18th. They had two workstations set up to teach festival-goers how to use their hands to form a metal casting. Each visitor left the demonstration with their very own casting. This past year, the Foundry in a Box has been presented to more than 5,200 students in more than 30 schools.



2013-2014 Meeting Schedule

<u>Date</u>	<u>Event</u>	<u>Location</u>	<u>Tentative Speaker</u>
Sat, August 24, 2013	Picnic & Golf Outing	Mountain View Golf	
Mon, September 9, 2013	Regular Meeting	Anniston	Bob Smith , President— Lee Brass
Mon, October 14, 2013	Regular Meeting	Wynfrey Hotel	George Houghton , Senior Engineer—Carbide Industries
Mon, November 11, 2013 in	Regular Meeting	Wynfrey Hotel	Sharon Lovoy —"Generations the Workplace"
Mon, December 9, 2013	Christmas Party	Wynfrey Hotel	
Mon, January 13, 2014	Regular Meeting	Wynfrey Hotel	Bob Zeeb , VP Operations— U.S. Pipe
Mon, February 10, 2014	Regular Meeting	Meridian, MS	TBA
Mon, March 10, 2014	Regular Meeting	Wynfrey Hotel	TBA
Mon, April 14, 2014	Regular Meeting	Wynfrey Hotel	TBA / Student Casting Comp.
Mon, May 12, 2014	Regular Meeting	Wynfrey Hotel	Past Chairman & Awards

Regular Meeting Schedule:

Meeting Place: Wynfrey Hotel, Birmingham, AL
 5:00pm Board Meeting
 6:00pm Meeting Registration & Social Hour
 6:30pm Dinner & Technical Presentation